

ESVglobal

CONNECTING EVERYWHERE



BROCHURE



WHY OUR COMPANY IS SPECIAL

-  **Assured Quality** - We have highly equipped testing lab
-  **We Produce Cables** - Inhouse cable extrusion facility
-  **24hrs Production** - We give accommodation facilities for our staffs to meet prompt delivery
-  **Go Green** - we use 100% roof top solar power for our power needs
-  **Easy to Reach** - our unit is located just 3km from national highway

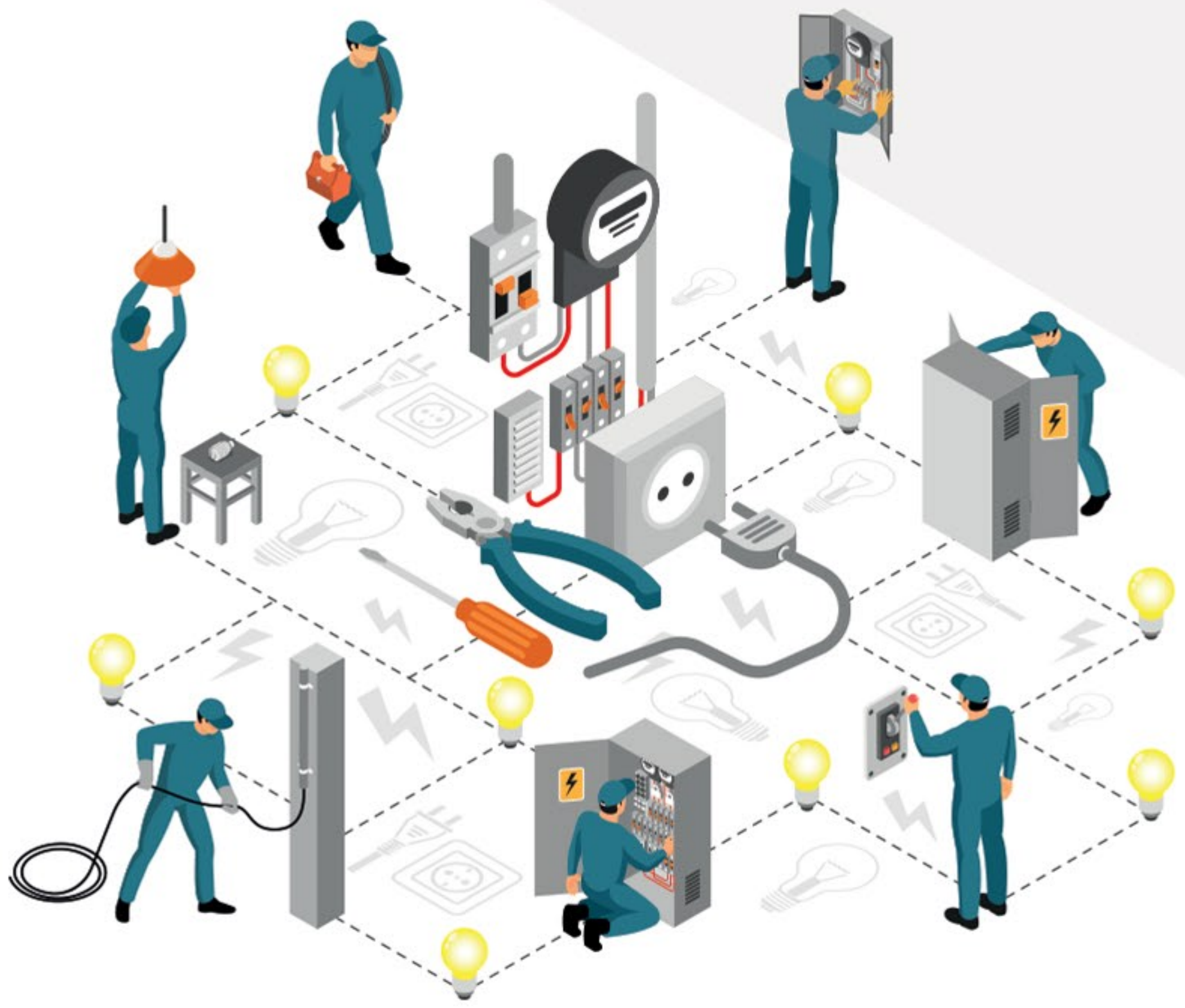


MISSION

- Enhance infrastructural facilities to keep in step with the latest advancements and developments in technology
- Consistent growth and performance is highly important when it comes to the usage of products. This is why we make sure that the end products reach the market, it is faultless and caters to a wide range of industries

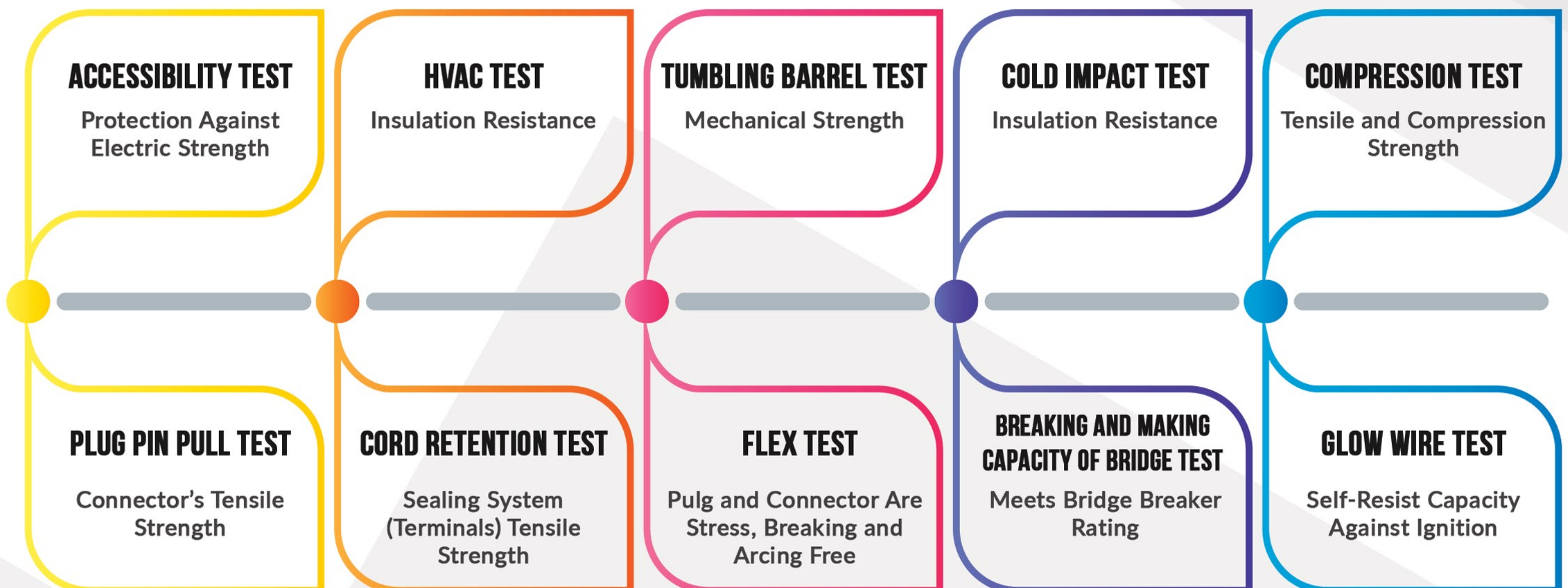
VISION

- To meet customer's requirements by the advantage of pick and choose all specifications under one roof.
- Vision is to deliver time bound quality products that are superiorly designed, precision engineered to perfection, to help the customers overcome their constraints while enabling scalability and increased performance at reduced cost.
- ESV global guarantees to offer its clients good customer support services for problem solving and better relations.



ASSURED QUALITIES AND TESTING FACILITY

Quality is important as its inherent cost effectiveness contributes to the competitiveness of the company's products and services, and to profitability and growth. The contribution of every member of our team to the quality of products, to customer service and the company is essential to the goal of excellence through quality.



CERTIFICATES

- Our quality of power cord and cable are recognized and certified with BIS AND ISO certificates.
- Through these certificates, our products are not just appreciated but approved in the industry for their exceptional performance.

IS 1293:2005 IS 694:2010 ISO 9001:2015



OUR VALUABLE CUSTOMERS



VIJAYALAKSHMI



FIELDS OR INDUSTRIES



ELECTRONIC AND HOME APPLIANCES



MEDICAL SUPPLIES



AUTOMOTIVE APPLIANCES



TELECOM INDUSTRY



POWER TOOL INDUSTRY



HOSPITALITY INDUSTRY



INDUSTRIAL APPLIANCES



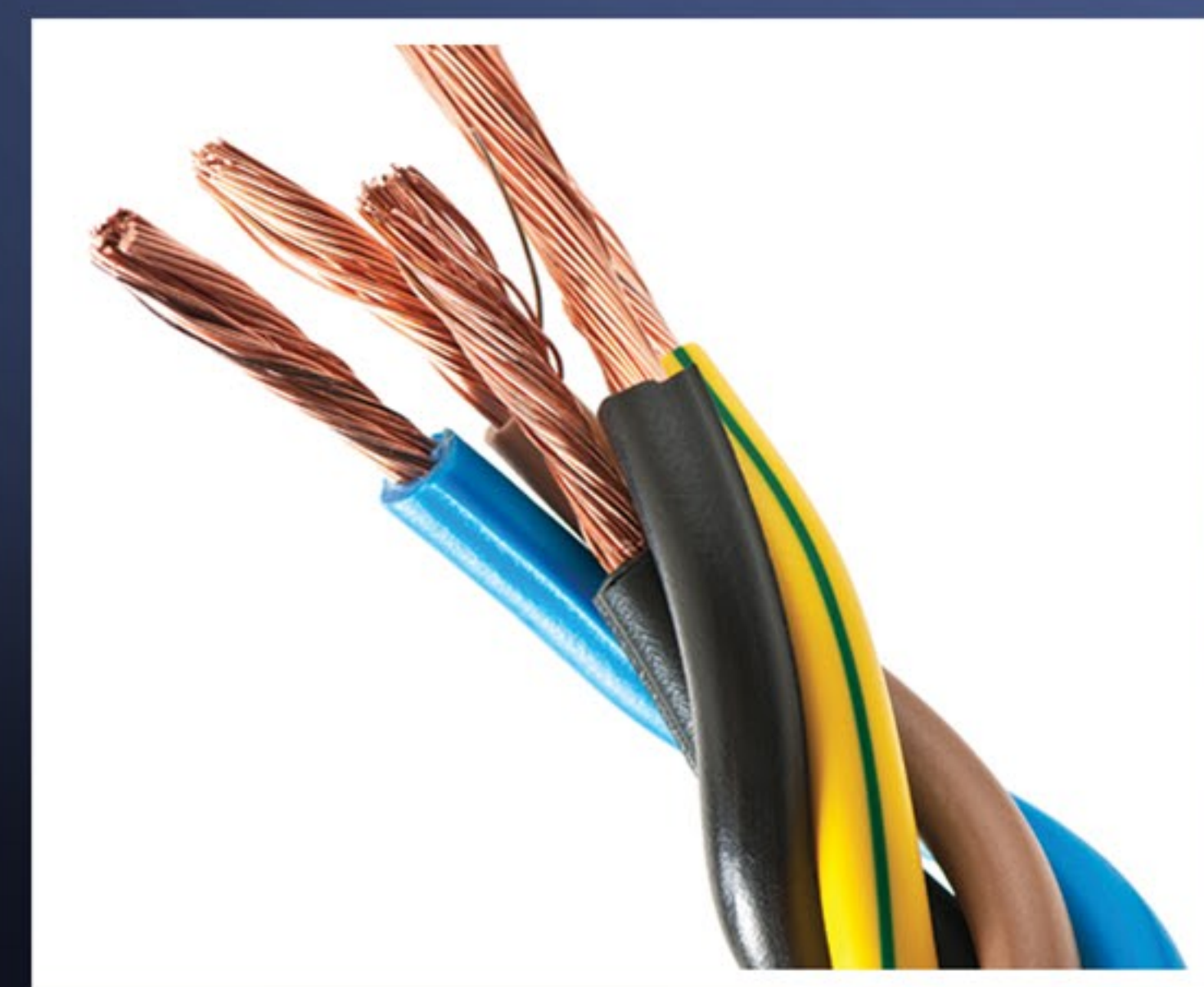
CONSUMER ELECTRONICS



EXPORT POWER CORDS

OUR CABLE PLANT

Our cables are made with 65mm/35mm machine from M/S JOHN ROYLE & SONS USA, a highly advanced cable extrusion system used worldwide.



SPECIALTIES OF OUR CABLES

- Electrostatic powder applicator
- Multi trough cooling facility to ensure proper cooling of cables
- High speed extrusion line
- Advanced electric control panel ensuring uniform quality in nozzle material supply and heat
- Made with high grade PVC and higher copper
- Ultra-modern laboratory to test all national and international standards

OUR PVC

- Meets ROHS compliance
- High strength to weight ratio
- Excellent thermal and electrical resistance
- Mechanical and thermal properties will meet ASTM & UL standards

ADVANTAGES

- High impact strength
- Dimensionally stable
- Easily machined using standard metal working tools
- Corrosion resistant
- Easily cemented and welded
- Lightweight
- Excellent fire rating



PLUG INSERT

- We manufacture High quality plug insert with highly precision tool and modern vertical moulding machine
- Raw material (PBT) used meets ROHS compliant
- Glow wire test at @ 7500 c passed
- Insulated and flame retardant
- PINS meet VDE,UL,DIN standards ROHS compliant



TERMINAL

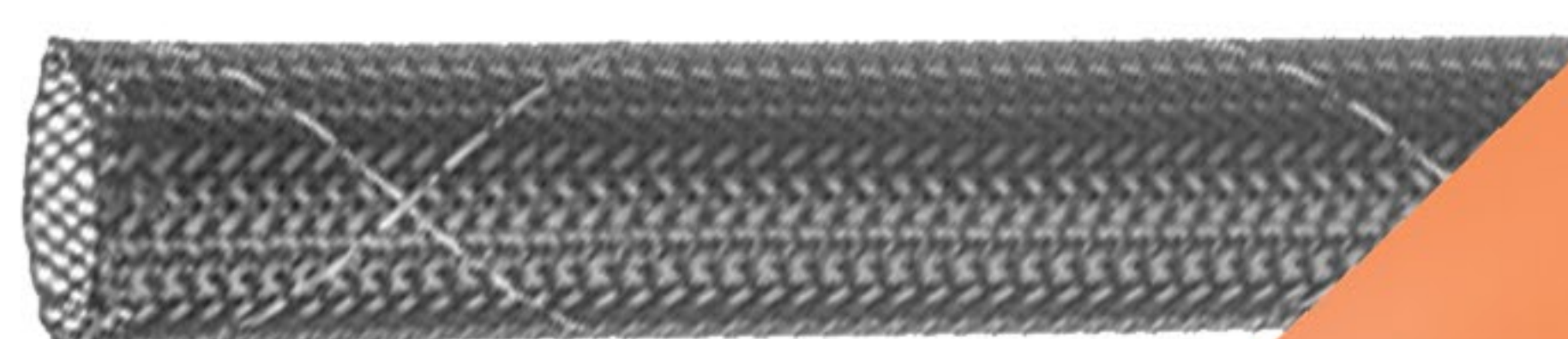
- High durability and reliability
- Excellent physical properties
- Dimensional precision
- Insulated and flame retardant
- Resistance to corrosion
- Very good surface finish



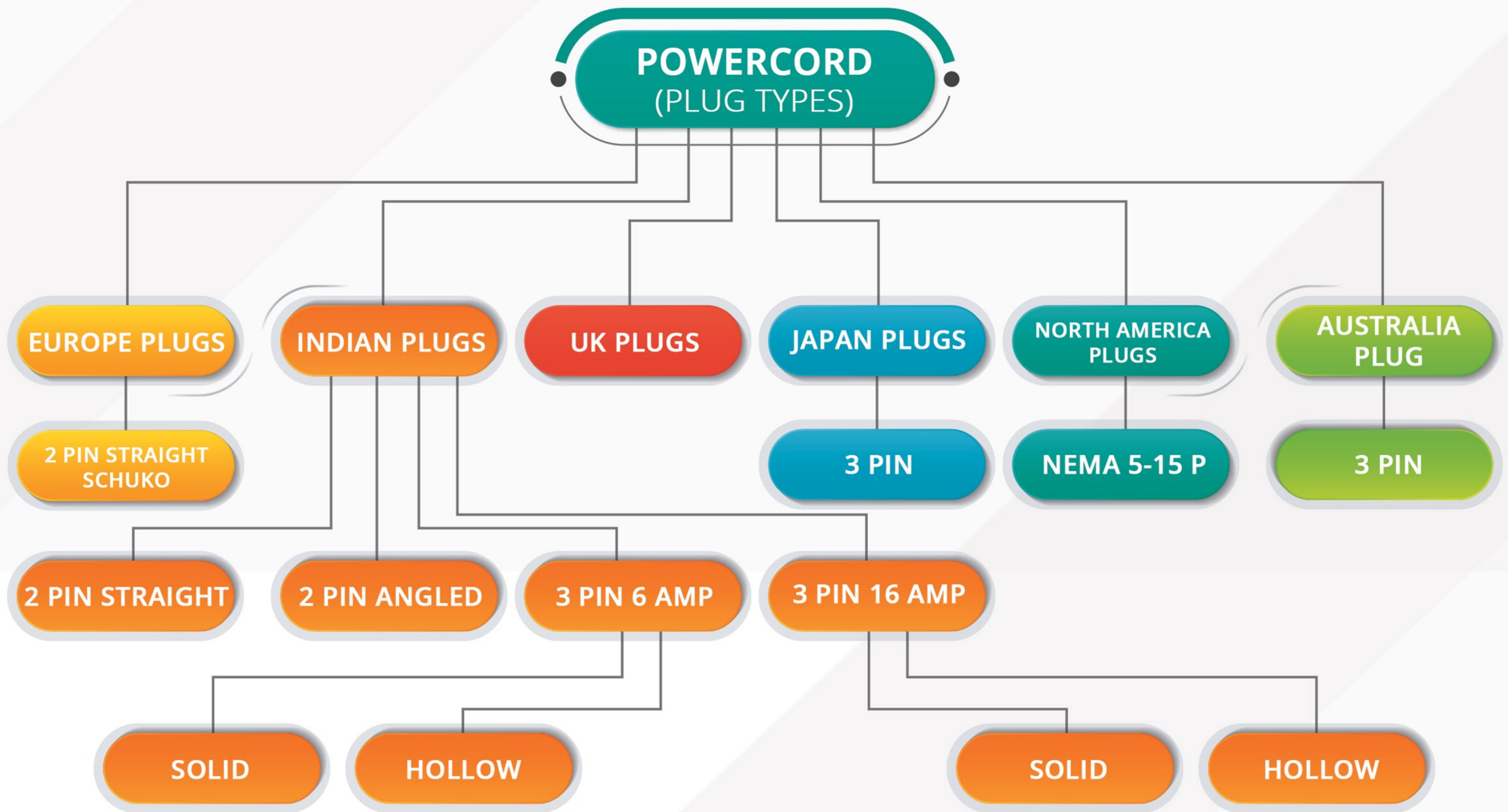
OUR SLEEVE

- Our Sleeve is fiberglass sleeving coated with PVC, with very good dielectric features.
- Breakdown Voltage: 2.5KV - 4 KV
- Bending Test: No cracking or detachment of coating shall be visible after bending after 96 hrs at 130°C or at -25°C
- Standard: IEC 60684-1

- Exceptional insulation characteristics
- Stress control properties
- high strength and resilience
- Long-term weather and regular wear & tear resistance



RANGE OF PRODUCTS



UK (BRITISH PLUG) WITH FUSE:

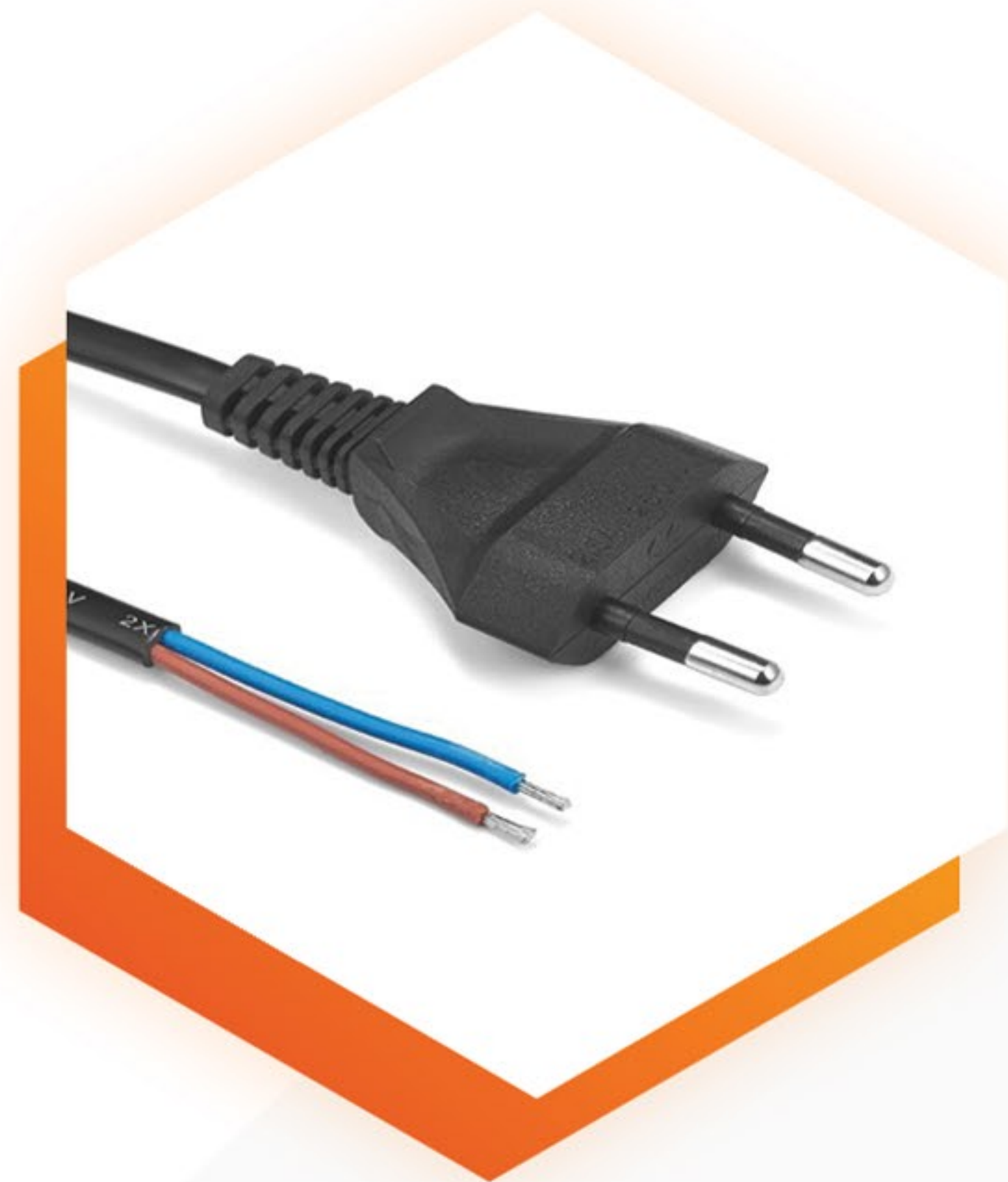


- **Cable Ratings UK Plug:**
HO5VV-F VDE (3C*0.75 sq.mm)
- **Rating:** 5A, 10A, 13A & 250V~
- **Plug Standard:** BS 1363 / ASTA
- **Pins:** 3 Pin Flat
- **Conductor:** Annealed Bare Copper
- **Insulation:** HO5VV-F 300/500V
- **Cable Jacket:** Harmonized PVC Type
- **Colour:** Black / White
- **Other side:** As per customer requirement
- **Length:** As per customer requirement
- **Standard:** HO5VV-F VDE



INDIAN PLUGS

2 PIN STRAIGHT (5A)



- **Cable Ratings (Round):**
2R50 (16/0.193)
2R75 (24/0.193)
- **Rating:** 2.5A , 5A & 250V
- **Plug Standard:** Non IS
- **Pins:** Solid/Hollow Pins
- **Conductor:** Annealed Bare Copper

- **Insulation:** PVC Type - A as per IS 5831 - 84
- **Cable Jacket:** PVC Type ST1 as per IS 5831- 84
- **Colour:** Black (Can be made as per customer requirements)
- **Other side:** Any end as requested by customer
- **Length:** As per customer requirement



2 PIN ANGLED

- **Country:** India
- **Name:** Indian Plug - 2 Pin Angled
- **Description:** 2 Pin Angled Plug for Class II appliances
- **Certification:** BIS
- **Standard:** IS 1293



INDIAN PLUG - 3 PIN 16 A



3 PIN 6 A

- **Cable Ratings:**
24/0.2 (3C*0.75 sq.mm)
32/0.2 (3C*0.1 sq.mm)
- **Rating:** 6A & 250V~
- **Plug Standard:** IS 1293 : 2005
- **Pins:** Solid/Hollow Pins
- **Conductor:** Annealed Bare Copper
- **Insulation:** PVC Type - A as per IS 5831 - 84
- **Colour:** Black / White (Can be made as per customer requirements)
- **Other side:** Can be made as per customer requirements
- **Length:** As per customer requirement
- **Matching Connector:** C13S , C13RA & C13LA
- **Standard:** IS 694 for ISI approved cable



- **Cable Ratings:**
24/0.193 (3C*0.75 sqmm)
32/0.2 (3C*1 sqmm)
30/0.250 (3C*1.5 sqmm)
- **Rating:** 16A & 250V~
- **Plug Standard:** Complying to IS 1293 : 2005
- **Pins:** Solid/ Hollow Pins
- **Conductor:** Annealed Bare Copper
- **Insulation:** PVC Type - A as per IS 5831 - 84
- **Cable Jacket:** PVC Type ST1 as per IS 5831- 84
- **Colour:** Black / White (Can be made as per customer requirements)
- **Other side:** As per customer requirement
- **Length:** As per customer requirement
- **Matching Connector:** C13, C19



AUSTRALIA PLUG - 3 PIN



- Country: Australia
- Name: Australia AS/NZS 3112 3 Pin
- Description: 3 Pin Australian Plug for Class I appliances
- Certification: VDE with NSW
- Standard: NSW



EUROPE PLUGS - 2 PIN STRAIGHT



- Rating: 16A & 250V~
- Plug Standard: As Per Schuko
- Pins: 2 Pin Male
- Conductor: Annealed Bare Copper
- Insulation: PVC Type - A as per IS 5831 - 84
- Cable Jacket: PVC Type ST1 as per IS 5831- 84
- Colour: Black (Can be made as per customer requirements)
- Other side: As per customer requirement
- Length: As per customer requirement
- Matching Connector: C13 Optional
- Cable: VDE 3 x 0.75 sq mm



NORTH AMERICAN PLUG NEMA 5 – 15 P



- Rating: 10A & 125V~
- Plug Standard: 5 - 15P
- Pins: As per UL standard UL 498 & UL 817
- Conductor: Annealed Bare Copper
- Insulation: E311111 c(UL) (UL) SVT
- Other side: As per customer requirement
- Length: As per customer requirement
- Matching Connector: C13 & C12 Optional
- Matching Plug: As Per NEMA
- Standard: Cables as per UL SVT 3 CORE * 18 AWG

JAPAN PLUG - 3 PIN



- Country: Japan
- Name: Japan Plug - 3 Pin
- Description: 3 Pin Japan Plug for Class I appliances
- Certification: PSE JET
- Standard: H23



CONNECTOR MODELS



3 POLE STRAIGHT CONNECTOR



- **Cable:**
- 24/0.2(0.75 sq.mm) -6A
- **Standard:** IS 694 for ISI approved Cables
- **Rating:** 10A & 250V~
- **Conductor:** Annealed Bare Copper
- **Insulation:** PVC Type - A as per IS 5831 - 84
- **Cable Jacket:** PVC Type ST1 as per IS 5831- 84
- **Colour:** Black (Can be made as per customer requirements)
- **Length:** As per customer requirement



5S CONNECTOR



- **Rating:** 2.5A & 250V~
- **Plug Standard:** Indian plug & UL approved plug
- **Connector Standard:** CS
- **Pins:** 3 Pin Female Connector
- **Conductor:** Annealed Bare Copper
- **Cable Jacket:** Standard Colour Black
- **Colour:** Standard Colour Black
- **Other side:** Available in any Plug Combination
- **Length:** As per customer requirement
- **Matching Plug:** 3 Pin Plug



SECURE LOCK



- **Rating:** 10A & 250V~
- **Conductor:** Annealed Bare Copper
- **Insulation:** PVC Type - A as per IS 5831 - 84
- **Cable Jacket:** PVC Type ST1 as per IS 5831- 84
- **Colour:** Black (Can be made as per customer requirements)
- **Length:** As per customer requirement
- **Cable:** 48/0.2 (1.5 sqmm) UL, CSA 18AWG
- **Standard:** IS 694 & UL Approved cables



IEC C14 + C13 CONNECTOR



- **Rating:** 10A & 250V~
- **Conductor:** Annealed Bare Copper
- **Insulation:** PVC Type - A as per IS 5831 - 84
- **Cable Jacket:** PVC Type ST1 as per IS 5831- 84
- **Colour:** Black (Can be modified as per customer requirements)
- **Length:** As per customer requirement



IEC C19 + C20 CONNECTOR



- **Rating:** 16A & 250V~
- **Conductor:** Annealed Bare Copper
- **Insulation:** PVC Type - A as per IS 5831 - 84
- **Cable Jacket:** PVC Type ST1 as per IS 5831- 84
- **Colour:** Black (Can be modified as per customer requirements)
- **Length:** As per customer requirement



Contacts

Support:

+91 98947 25051,
+91 81908 55333

Email: production@esvglobal.com

Web: www.esvglobal.com

Address:

31/2, Rayapalayam Village, Kathirampatti Road,
Nasiyanur (Po), Erode - 638 107.

**THIS BROCHURE ENDS.
OUR PARTNERSHIP CONTINUES.**

Follow us

